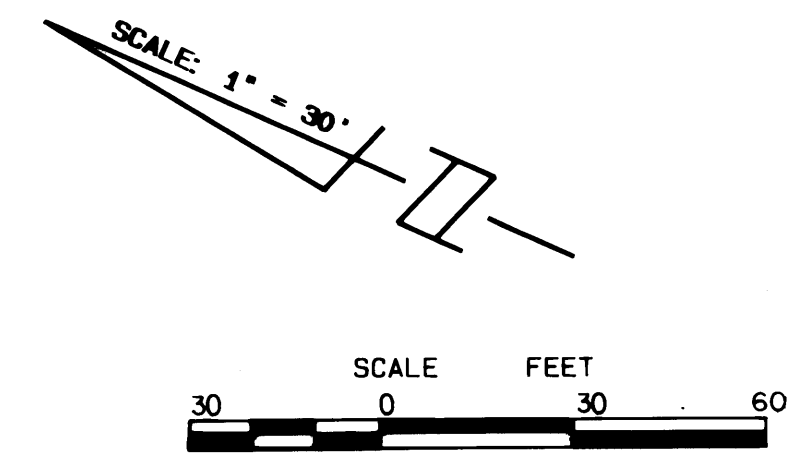


PLAT NO. 18A SAILFISH POINT P.U.D.

BEING A REPLAT OF PLAT NO. 18
SAILFISH POINT P.U.D.
LYING IN FRACTIONAL SECTION 17,
TOWNSHIP 38 SOUTH, RANGE 42 EAST,
MARTIN COUNTY, FLORIDA.



MAY 1988

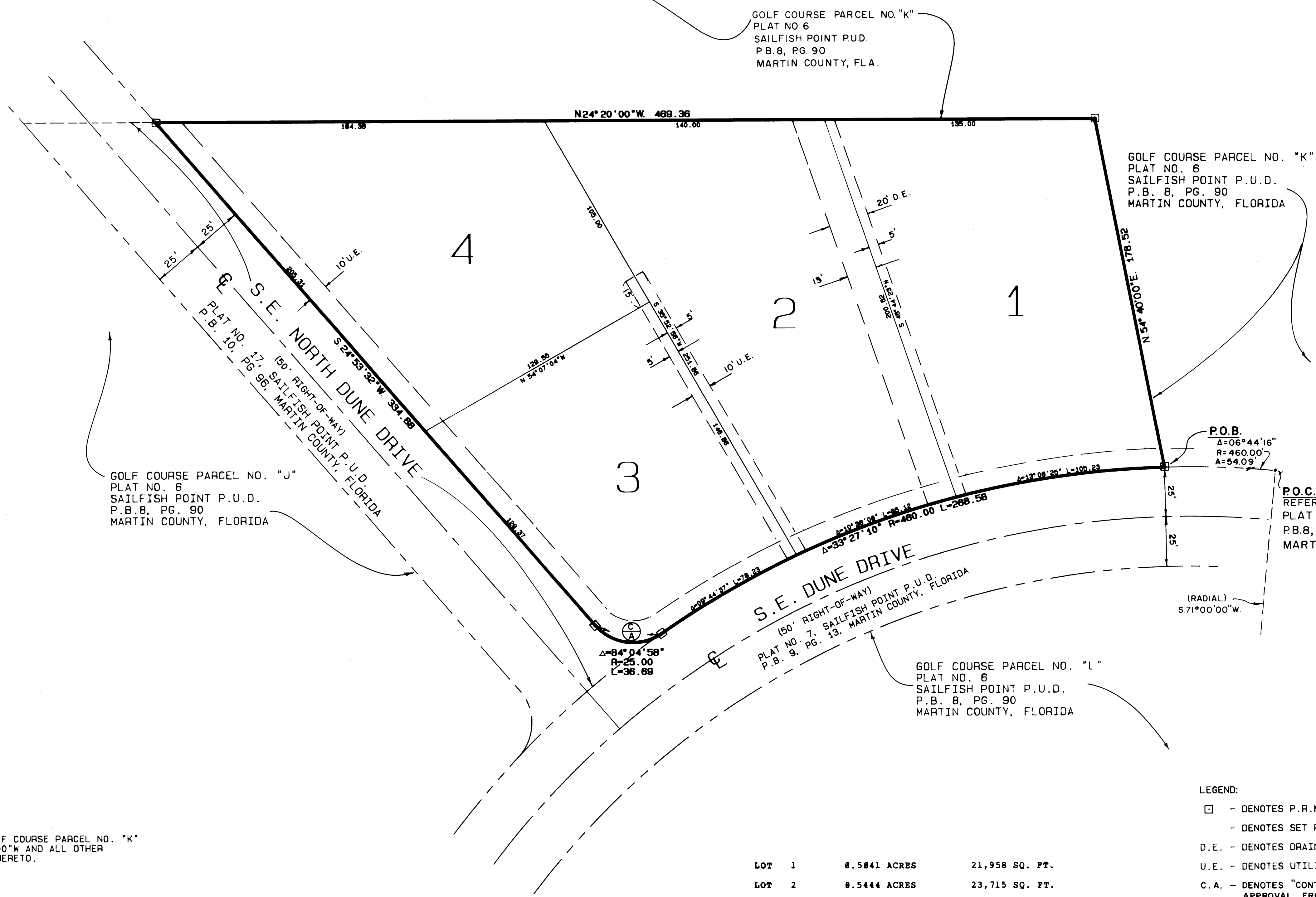
I, MARSHA STILLER, CLERK OF THE CIRCUIT COURT OF MARTIN COUNTY, FLORIDA, HEREBY CERTIFY THAT THIS PLAT WAS FILED FOR RECORD IN PLAT BOOK 11, PAGE 41, MARTIN COUNTY, FLORIDA, PUBLIC RECORDS, THIS DAY OF 1988.

MARSHA STILLER, CLERK CIRCUIT COURT MARTIN COUNTY, FLORIDA.

BY _____
DEPUTY CLERK

FILE NO. _____

(CIRCUIT COURT SEAL)



COVENANTS AND RESTRICTIONS

THIS PLAT AND THE PROPERTY DESCRIBED HEREIN, ARE SUBJECT TO THE COVENANTS, RESTRICTIONS, LIEN RIGHTS, AND OTHER PROVISIONS CONTAINED IN THAT CERTAIN DECLARATION OF PROTECTIVE COVENANTS AND RESTRICTIONS FOR SAILFISH POINT, DATED JANUARY 25, 1988, AND RECORDED FEBRUARY 4, 1988, UNDER CLERK'S FILE NUMBER 365941, IN OFFICIAL RECORD BOOK 488, AT PAGE 2858, PUBLIC RECORDS OF MARTIN COUNTY, FLORIDA, AS AMENDED BY THE FIRST AMENDMENT TO DECLARATION, RECORDED UNDER CLERK'S FILE NUMBER 399150, IN OFFICIAL RECORD BOOK 513, AT PAGE 1894, PUBLIC RECORDS OF MARTIN COUNTY, FLORIDA, AND THE SECOND AMENDMENT TO DECLARATION, RECORDED UNDER CLERK'S FILE NUMBER 478598, IN OFFICIAL RECORD BOOK 573, AT PAGE 1112, PUBLIC RECORDS OF MARTIN COUNTY, FLORIDA, AND THE THIRD AMENDMENT TO DECLARATION, RECORDED UNDER CLERK'S FILE NUMBER 51494, IN OFFICIAL RECORD BOOK 682, PAGE 899, PUBLIC RECORDS OF MARTIN COUNTY, FLORIDA, AND THE FOURTH AMENDMENT TO DECLARATION, RECORDED UNDER CLERK'S FILE NUMBER 518378, IN OFFICIAL RECORD BOOK 622, PAGE 199, PUBLIC RECORDS OF MARTIN COUNTY, FLORIDA, AND THE FIFTH AMENDMENT TO DECLARATION, RECORDED UNDER CLERK'S FILE NUMBER 551172, IN OFFICIAL RECORD BOOK 645, PAGE 2553, PUBLIC RECORDS OF MARTIN COUNTY, FLORIDA, AND THE SIXTH AMENDMENT TO DECLARATION, RECORDED UNDER CLERK'S FILE NUMBER 648296, IN OFFICIAL RECORD BOOK 712, PAGE 2347, PUBLIC RECORDS OF MARTIN COUNTY, FLORIDA, AND THE SEVENTH AMENDMENT TO DECLARATION, RECORDED UNDER CLERK'S FILE NUMBER 662721, IN OFFICIAL RECORD BOOK 724, PAGE 2382, PUBLIC RECORDS OF MARTIN COUNTY, FLORIDA, TOGETHER WITH THE COVENANTS, RESTRICTIONS, AND OTHER PROVISIONS CONTAINED IN THAT CERTAIN SUPPLEMENTARY DECLARATION OF PROTECTIVE COVENANTS AND RESTRICTIONS, FOR PLAT NO. 18*A SAILFISH POINT P.U.D., RECORDED CONCURRENTLY WITH THE RECORDATION OF THIS PLAT.

GOLF COURSE PARCEL NO. "J"
PLAT NO. 6
SAILFISH POINT P.U.D.
P.B. 8, PG. 90
MARTIN COUNTY, FLORIDA

GOLF COURSE PARCEL NO. "K"
PLAT NO. 6
SAILFISH POINT P.U.D.
P.B. 8, PG. 90
MARTIN COUNTY, FLA.

GOLF COURSE PARCEL NO. "K"
PLAT NO. 6
SAILFISH POINT P.U.D.
P.B. 8, PG. 90
MARTIN COUNTY, FLORIDA

GOLF COURSE PARCEL NO. "L"
PLAT NO. 6
SAILFISH POINT P.U.D.
P.B. 8, PG. 90
MARTIN COUNTY, FLORIDA

P.O.C.
REFERENCE POINT "C"
PLAT NO. 6, SAILFISH POINT P.U.D.
P.B. 8, PAGE 90
MARTIN COUNTY, FLORIDA

NOTE:

THERE SHALL BE NO BUILDINGS OR STRUCTURES PLACED ON UTILITY EASEMENTS.

THERE SHALL BE NO BUILDINGS OR THE PLANTING OF TREES OR SHRUBS ON DRAINAGE EASEMENTS.

WHEN DRAINAGE AND UTILITY EASEMENTS CROSS, DRAINAGE EASEMENTS SHALL TAKE PRECEDENCE.

THERE SHALL BE NO LOT SPLITS EXCEPT TO CREATE LARGER LOTS.

BEARING BASE:
THE WESTERLY LINE OF GOLF COURSE PARCEL NO. "K" IS TAKEN TO BE N 24°20'00"W AND ALL OTHER BEARINGS ARE RELATIVE THERETO.

LOT 1	0.5841 ACRES	21,958 SQ. FT.
LOT 2	0.5444 ACRES	23,715 SQ. FT.
LOT 3	0.3852 ACRES	16,778 SQ. FT.
LOT 4	0.5838 ACRES	21,911 SQ. FT.

- LEGEND:**
- - DENOTES P.R.M. (PERMANENT REFERENCE MONUMENT) FOUND (#959)
 - - DENOTES SET P.C.P. (PERMANENT CONTROL POINT)
 - D.E. - DENOTES DRAINAGE EASEMENT
 - U.E. - DENOTES UTILITY EASEMENT
 - C.A. - DENOTES "CONTROL OF ACCESS" NO VEHICULAR ACCESS WITHOUT APPROVAL FROM SAILFISH POINT PROPERTY OWNERS' AND COUNTRY CLUB ASSOCIATION, INC.

LINDAHL, BROWNING FERRARI & HELLSTROM, INC.
Consulting Engineers, Planners & Surveyors

P.O. BOX 727
JUPITER, FLORIDA 33458

90 CENTRAL PARKWAY
SUITE 430
STUART, FLORIDA 33497